



HANNA

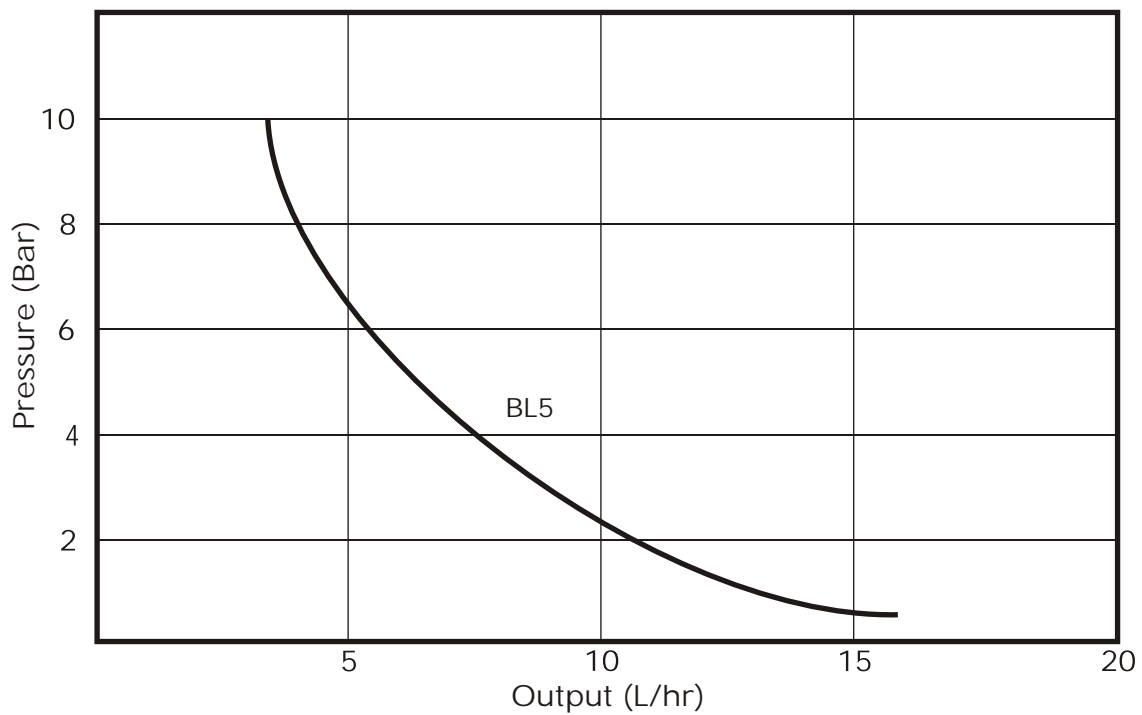
instruments

MADE IN ITALY

DATA SHEET

Chemical
Dosage Pumps

BL



PUMP

Hanna BL series chemical dosage pumps are high specification products suitable for the accurate dosage of a wide variety of chemicals. They are of the positive displacement diaphragm type with magnetic solenoid motors, which are both inherently more reliable than the alternative mechanical motor drive pumps and are also simple to operate through an adjustable flow rate control. This control is mounted on the front face of the pumps and are also simple to operate through an adjustable flow rate control. This control is mounted on the front face of the pump and adjusts the stroke frequency, a pulsating LED light indicating stroke cycles for easy reference. The solenoid motor design also provides greater accuracy through consistent stroke lengths, thus keeping flow rate constant.

DESIGN FEATURES

The pump is designed with durability and reliability as a priority and only the best materials are used. The diaphragm is one-piece 'Teflon' and the inlet and outlet valve assemblies use glass check valves and 'Kynar' springs for maximum corrosion resistance. The pump housing is made from fibre-reinforced propylene offering IP65 resistance against splashes and spills and the pump head is made from 'Kynar'.

All pumps are supplied complete with necessary accessories for a complete installation including suction and discharge valves, 7m of polythene tubing and a ceramic weight.

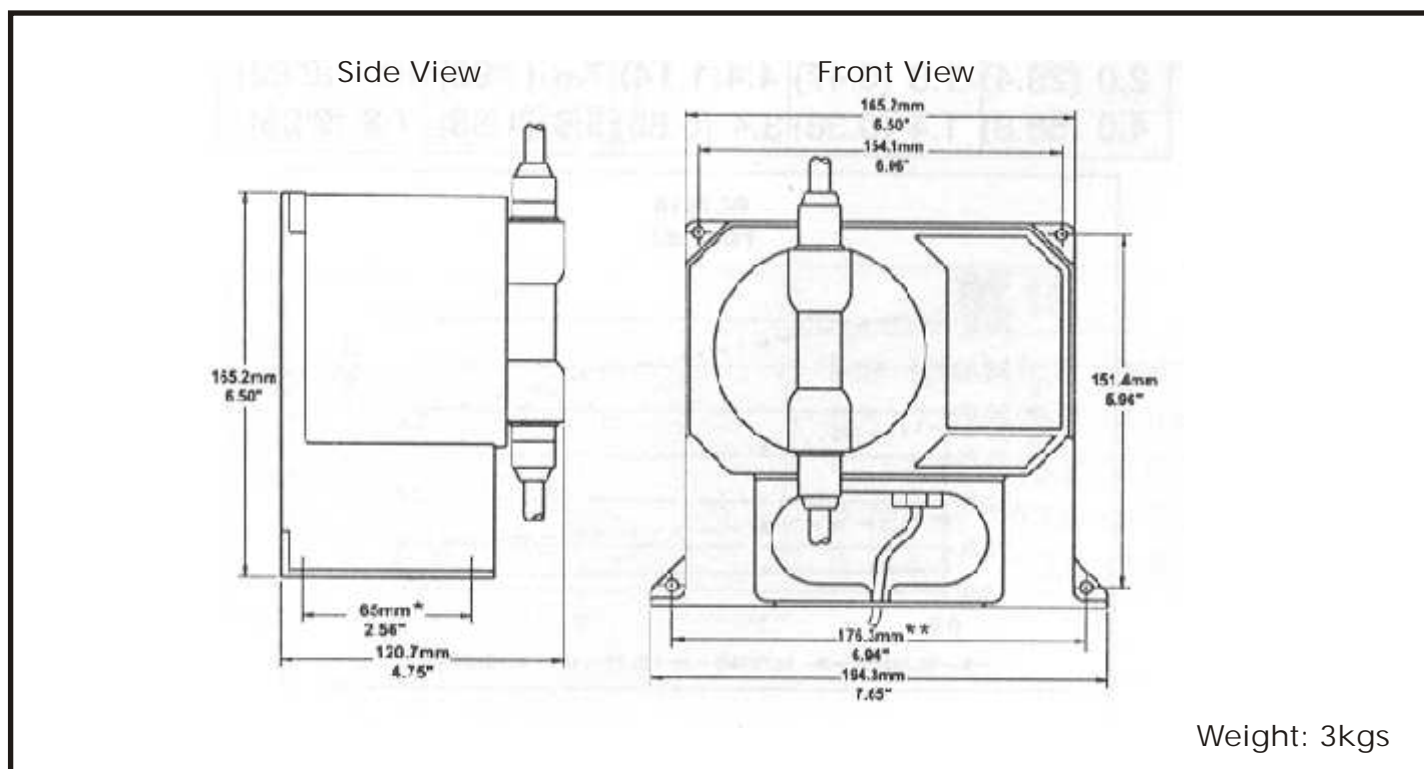
OPERATING CONDITIONS

Max. Absorbed Power: 200W, 1x240V, 50Hz

Max Pressure: +50°C

Self Priming Performance: Max 1.5m suction

DIMENSIONS AND WEIGHT



* Dimensions in mm

NB. Contents herein are not warranted. The right is reserved to amend specifications without notice.

AVAILABLE FROM

DT100B-06/08

D&S DAVIS & SHIRTLIFF
know H₂O through experience
www.dayliff.com

KENYA

NAIROBI - HEAD OFFICE
TEL: (254 20) 6968000, 558335, FAX: 557617
d&s@dayliff.com
WESTLANDS
TEL: (254 20) 4446011, 4446016, FAX: 4451038
westlands@dayliff.com
ELDORET
TEL: (254 53) 2061306, FAX: 2062335
d&s@eld.dayliff.com
KISUMU
TEL: (254 57) 2024763, FAX: 2023103
d&s@ksm.dayliff.com

MOMBASA
TEL: (254 41) 2495920, 2490861, FAX: 2490868
d&s@msa.dayliff.com
MALINDI
TEL: (254 42) 20425, FAX: 20426
d&s@mld.dayliff.com
NAKURU
TEL: (254 51) 2213146, 2213248, FAX: 2212956
d&s@nkr.dayliff.com

ETHIOPIA
ADDIS ABABA
TEL: (251 11) 5159341/4
d&s@et.dayliff.com

ZAMBIA

LUSAKA
TEL/FAX: (260 211) 288010/1, 845010/1
lusaka@zm.dayliff.com
KITWE
TEL/FAX: (260 212) 22174/67,
kitwe@zm.dayliff.com

RWANDA

KIGALI
TEL: (250) 504039, FAX: 504033
sales@dayliff.co.rw

TANZANIA

DAR ES SALAAM
TEL: (255 22) 2112515/6, FAX: 2112513
office@tzdayliff.com
ARUSHA
TEL: (255 25) 2502517/8, FAX: 2502516
office@ars.tzdayliff.com
ZANZIBAR
TEL: (255 24) 2234660/1, FAX: 2234664
office@znz.tzdayliff.com
UGANDA
KAMPALA
TEL: (256 414) 346337/8, FAX: 346335
d&s@ug.dayliff.com