

DAYLIFF

DATA SHEET

PUMP CONTROLLERS

BRIO PUMP CONTROLLER



An in-line electronic pump controller for automatic operation of pressurised pump supplies. Features include:-

- Starts pump on pressure and stops on low flow. The start pressure is adjustable between 1.3 - 5 Bar
- Inbuilt timer delays pump starting and controls pump cycling in low flow conditions eliminating the need for a separate pressure vessel
- Dry run protection with automatic reset
- LED power and run dry indicators
- Built in pressure gauge

Max Motor Size: 1.5kW/1ph

Max Operating Pressure: 10 Bar

Max Fluid/Ambient Temp: 55°C

Dimensions (L/W/H): 190/105/96mm

Max Current: 12A

Connection: 1" M

Protection: IP65

BRIO TOP PUMP CONTROLLER



An inline electronic pump controller that starts on pressure and stops on low flow or at max. set threshold pressure. The controller can be fitted with a single phase electric pump or with twin pump system in a variable speed set-up to provide constant pressure on demand. Features include:

- Protection against dry running with automatic reset
- Easy and precise of working pressure via the display
- Led indicators for power, error and dry running indicator
- Operation in master/slave configuration into twin booster sets
- Alarm log and a configurable relay output
- Terminals for remote connection (1 input + 1 output)
- Rotor anti-blocking function used to prevent seizure of mechanical parts during prolonged periods of pump inactivity.

Connection: 1" M

Max. Motor Size: 2.2kW (3HP)

Protection: IP65

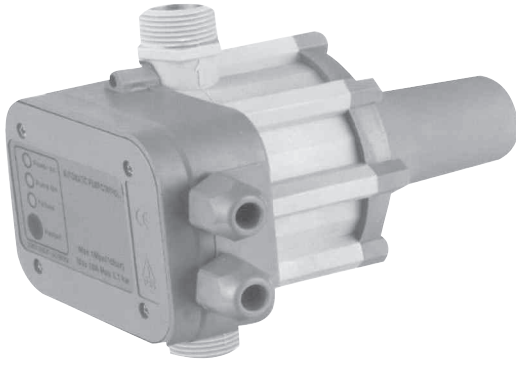
Max. rated current: 16A

Max. operating pressure: 10 Bar

Max fluid / Ambient temperature: 55°C

Dimensions (L/W/H): 225/150/115mm

PRESS PUMP CONTROLLER



An in-line electronic pump controller for automatic operation of pressurised water supplies. Features include:-

- Starts pump on pressure (fixed at 1.5 Bar) and stops on low flow
- Dry run protection provided. Standard models require manual reset, Automatic models restart when supply returns
- Incorporates a spring activated hydraulic accumulator to control pump cycling
- LED power on, pump run and run dry indicators

Max Motor size: 1.1kW/1ph

Max Current: 10A

Max Operating Pressure: 10 Bar

Connection: 1" M

Dimensions (L/W/H): 227/130/168mm

Protection: IP65

SPIN FLOW SWITCH



An in-line pump controller for automatic operation by flow sensing and suitable for boosting from header tanks. Features include:-

- Starts pump when flow is sensed (minimum 2.4litres/min) and stops when flow ceases
- Pump stop time adjustable between 10 to 180 secs
- System is un-pressured in no flow condition so eliminating pump cycling

Max Motor Size: 1.5kW

Max Current: 12A

Max Operating Pressure: 10 Bar

Connection: 1" M

Max Water/Ambient Temps: 85°C/55°C

Protection: IP65

Dimensions (L/W/H): 142/118/112mm

PRESSURE SWITCH



Adjustable pressure switch for pressure control of pumps featuring normally closed brass alloy contacts and tear resistant cable glands

Type	Pressure range (Bar)	Factory setting (Bar)	Differential (Bar)	Rated current (A)
PM/5	1-5	1.4-2.8	0.6-2.3	16
PM/12	3-12	5-7	1.5-5	16

PADDLE FLOAT SWITCH



Paddle type float switch with weight and 3m PVC cable. The switch is suitable for both high level and low level control according to the wiring connections.

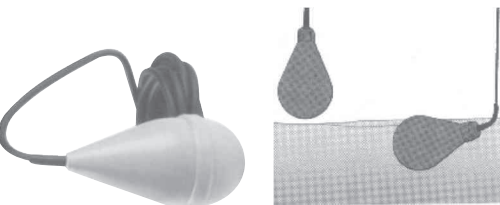
Max Current: 8A

Max Immersion: 3m

Max Working Temp: 60°C

Protection: IP68

BULB FLOAT SWITCH



Bulb float switches are suitable for dirty and waste water applications. They are made from non corroding PVC and are supplied with 5m cable. Applications can be for high or low level control according to the wiring connections.

Max Current: 8A

Max Depth: 40m

Max Working Temp: 60°C

Protection: IP68

KENYA
NAIROBI - HEAD OFFICE
 TEL: (+254 20) 6968 000
headoffice@dayliff.com
NAIROBI - WESTLANDS
 TEL: (+254 20) 444801116,
westlands@dayliff.com
NAIROBI - DOWNTOWN
 TEL: (+254 20) 340102
downtown@dayliff.com
NAIROBI - KAREN
 TEL: (+254 20) 3883513
karen@dayliff.com
THIKA
 TEL: (+254 67) 20084/5
thika@dayliff.com
ELDORET
 TEL: (+254 53) 2061306
eldoret@dayliff.com

NAKURU
 TEL: (+254 51) 2213248
nakuruoffice@dayliff.com
KISUMU
 TEL: (+254 57) 2024763
ksumoffice@dayliff.com
KISII
 TEL: (+254 58) 2030949
kisii@dayliff.com
NAIVASHA
 TEL: (+254 50) 2030510
naivasha@dayliff.com
MACHAKOS
 TEL: (+254 40) 2021668
naivasha@dayliff.com
MERU
 TEL: (+254 64) 3131033
meru@eld.dayliff.com

GARISSA
 TEL: (+254 46) 2102620
garissa@dayliff.com
KENYA COAST
MOMBASA - Main Office
 TEL: (+254 20) 2040432
d8smsa@dayliff.com
MALINDI
 TEL: (+254 42) 2120425
mlidoffice@dayliff.com
DIANI
 TEL: (+254 40) 3202181
dianioffice@dayliff.com
LAMU
 TEL: (+254 20) 2651052/56
lamu@dayliff.com

NYALI
 TEL: (+254 20) 2443357
d8s@nyali.dayliff.com
VOI
 TEL: (+254 20) 2028284
voi@dayliff.com
ETHIOPIA
ADDIS ABABA
 TEL: (+251 11) 5159341/44
d8sethiopia@dayliff.com
RWANDA
KIGALI
 TEL: (+254 252) 504039
rwoffice@dayliff.com

UGANDA
KAMPALA - Main Office
 TEL: (+256 414) 346337/8
d8skampala@dayliff.com
KAMPALA - NAKESERO
 TEL: (+256 392) 734633
d8snakesero@dayliff.com
GULU
 TEL: (+256 471) 433041
d8sgulu@dayliff.com
MBARARA
 TEL: (+256 753) 940 080
d8smbarara@dayliff.com

TANZANIA
DAR ES SALAAM - Main Office
 TEL: (+255 22) 2112515/6
d8sdaressalaam@dayliff.com
DAR ES SALAAM - KARIAKOO
 TEL: (+255 22) 2184867
d8skariakoo@dayliff.com
ARUSHA
 TEL: (+255 27) 2547317/8
arussha@dayliff.com
ZANZIBAR
 TEL: (+255 24) 2234660/1
zanzibar@dayliff.com
MWANZA
 TEL: (+255 28) 2541971/2
d8smwanza@dayliff.com

ZAMBIA
LUSAKA - Main Office
 TEL: (+260 211) 288010/1
d8slusaka@dayliff.com
NDOLA
 TEL: (+260 212) 610936/7
d8sndola@dayliff.com
KITWE
 TEL: (+260 212) 221747/67
d8skitwe@dayliff.com
LIVINGSTONE
 TEL: (+260 213) 320002/234
d8slivingstone@dayliff.com
SOUTH SUDAN
JUBA
 TEL: (+211 956) 397 070
juba@dayliff.com